

On-line mode

**Interactive
workshop**

**Build the personal
skills you need to
thrive.**

Learn to initiate and participate in difficult conversations, deal with setbacks, understand feedback, manage time, find out what to do in times of trouble, and learn where to go for help.

*Students on-
line **TRAINING
SCHOOL** 24th -
28th, May 2021.*

Training school RIS-ALiCE

**Al-rich industrial residues for
inorganic materials**



**VINS has introduces a
number of research
schools for doctoral
students. The research
school for doctoral
students have more
scheduled learning
activities that the
traditional doctoral
education, and the
students are scientists.**



**Working with
your
supervisor.**



RIS-ALiCE 18258

•••
<http://ris-alice.zag.si/>

•••
<https://forms.gle/FWpQaJeGmy6rLr7e9>

•••
e-mail:
risalice2021@gmail.com

•••



At VINS there are several local as well as national research schools and several international research schools. The research schools are different in many ways, for example regarding the size of the course package.

Important dates:

Registration lasts until:
15.03.2021.

Teams schedule by project tasks until: **15.04.2021.**

Communication with supervisor from: **19.04.2021.**

Training school: **24.05.2021.-28.05.2021.**

Deadline for abstracts:
20.06.2021.



This activity has received funding from the European Institute of Innovation and Technology (EIT), a body of the European Union, under the Horizon 2020, the EU Framework Programme for Research and Innovation

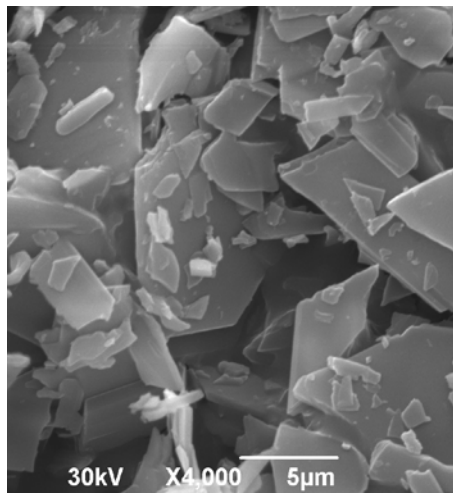


The overall aim of the research school is for the students to acquire a deeper scientific, critical, analytical and research ethics approach in order to be able to conduct research in the fields that are important to sciences.



Science education, in its broadest sense, has a responsibility to contribute to solving problems on its doorstep in collaboration with societal actors and to make connections to regional and global contexts.

24th - 28th May, 2021
ZOOM platform



Training and professional development for researchers at various stages in their career: graduate and doctoral students, early-career researchers, and those with substantial experience looking for a refresher or extending their research into new areas.

